



Finesse

Smart-Touch Motorized Drapery System

Ultra-Quiet Electronic Drapery Motor
with Touch Sensing Technology

QMT Automation
Solutions

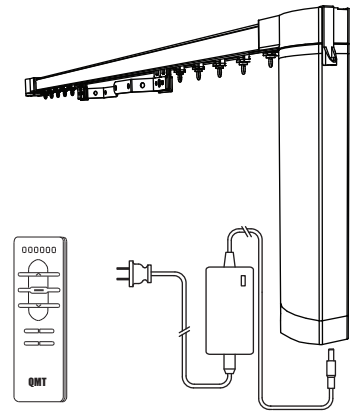
Dedication to quality and innovation

Finesse

Smart-Touch Motorized Drapery System

FEATURES

- Smart-Touch technology will start the curtain motor in the desired direction by simply pulling the fabric edge by hand.
- Ultra quiet electronic drive powered by safe low voltage current.
- Plug-n-Play installation.
- Built-in electronic processor provides automatic setting of travel limits with cushioned start/stop functionality.
- Built-in RF receiver with 2 programmable mid-way stops.
- Can be smoothly hand drawn in case of power failure.
- Built-in dry contact closure interface for direct connection to any Automation system.



SPECIFICATIONS

Motor:

- Power supply: 24VDC/1.5A (CUL listed)
- Rated torque: 1.2Nm
- Rated speed: 8"/sec
- Maximum fabric weight capacity: 133lbs
- Noise level measured at 3ft distance: <39dB

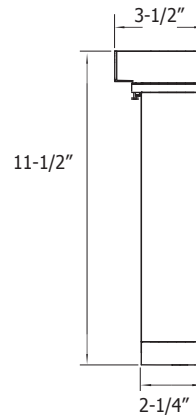
Hardware:

- Track profile: aluminum extrusion 6063 T5, white powder coated
- Maximum system width unspliced: 229"
- Maximum system width spliced: 454"
- Minimum curve radius: 14" if using pinch pleat carriers
20" if using ripplefold carriers
- Maximum load capacity: 3lbs per carrier
- Bracket spacing: 20" standard (16" at stack recommended)
- Transmission: 10mm polyurethane thermoplastic belt w/steel cords

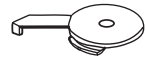
Controls:

- Built-in 433.92Mhz RF receiver with electronic processor
- Built-in dry contact closure input for building & hotel automation
- 6-channel RF remote control with 2 programmable mid-way stops
- Wireless RF wall switch (upon request)

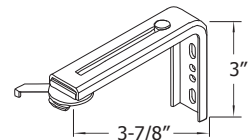
Motor dimensions



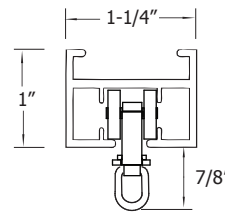
Ceiling mount bracket



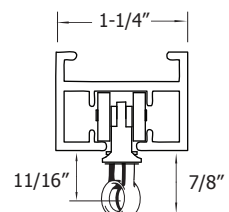
Wall mount bracket



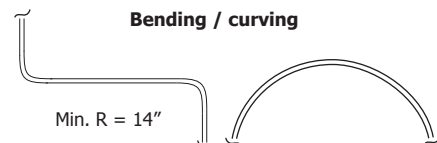
Pinch pleat carrier



Ripplefold carrier



Bending / curving



Textile Trimmings